



LONDON

**Over 38 years of experience**



# Contents

- 4** A Message from our Principal
- 4** About KAE
- 7** About the College
- 8** Our Courses
  - General English **8**
  - General English Plus **10**
  - One-to-One English **11**
  - Exam Preparation **12**
- 15** Your Progress
- 16** Social Activities
- 17** Academic Activities
- 18** Your First Week
- 21** College Accommodation
- 25** How to Enrol
- 26** How to Find KAE

Kensington Academy of English  
31 Jewry Street, London EC3N 2ET  
United Kingdom

Tel: +44 (0)20 7221 6665  
Fax: +44 (0)20 7243 1730  
Email: [nhg@kensingtonacademy.com](mailto:nhg@kensingtonacademy.com)  
[www.kensingtonacademy.com](http://www.kensingtonacademy.com)

Accredited by the



for the teaching  
of English in the UK



PREPARATION COURSES FOR TRINITY  
Secure English Language Tests



# A Message from our Principal

Every year we welcome hundreds of students from four continents and over 50 countries, and can therefore offer a truly international atmosphere. Some come to Kensington Academy of English (KAE) to study only English; others study English before or at the same time as taking academic courses at David Game College, such as A levels or the University Foundation Programme.

Whether you stay for a short course or for a year, we aim to do all we can to make your stay enjoyable, to help you to achieve your language goals and to provide you with a pleasant and safe place to live during your stay in London.

Our teachers, administrators and accommodation staff are all committed to working hard as a team to meet the needs of our students, and I am proud of the College's friendly and supportive atmosphere.

We look forward to welcoming you to KAE.



**David Game**  
MA (Oxon), MPhil (Lond)  
Principal, KAE

---

## About KAE

**KAE was established in 1978 by David Game, one of the UK's most original education entrepreneurs and philanthropists.**

Known for his energy, dynamism and innovative approach to education, David has built up an impressive group of independent schools and colleges in Britain and overseas. A keen linguist and a talented amateur photographer, David is also a

patron and collector of contemporary art. Many of the paintings he owns are displayed in the College, where students and staff can enjoy them.

KAE is the English Language Department of David Game College and is accredited by the British Council. The College attracts students from many countries and has been awarded Tier 4 Sponsor status by the UK Visas and Immigration (UKVI).

96% of our students would recommend KAE to a friend and would also come back to study here again.

‘KAE helped me  
to learn English in  
a short time.’

Iryna (Ukraine), Student





# About the College

## Location

- The College has a fantastic location in the historic area of Tower Hill (Central London, Zone 1) a short walk from the underground station
- Excellent transport links, just a short walk from Tower Hill, Aldgate and Liverpool Street underground stations
- A short distance from the shopping, entertainment and cultural attractions of the East End
- Close to a number of popular shopping areas, such as Old Spitalfields Market, Westfield Stratford City and Borough Market.

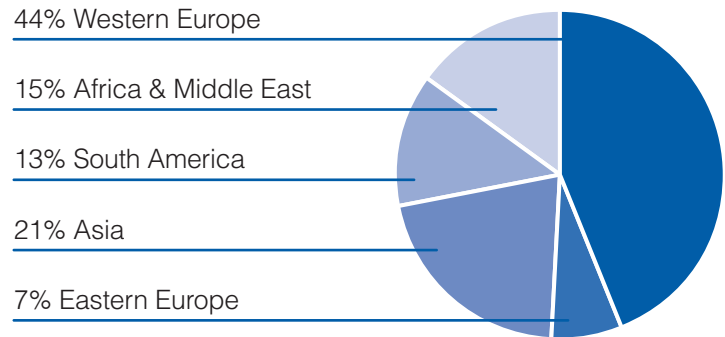
## Teaching style

- Well-trained, enthusiastic, professional teachers who are dedicated to providing a serious and stimulating learning experience
- Dynamic, focussed lessons ensure you get the most out of each class
- Supportive and encouraging teaching approach
- Clear objectives identified at the beginning of each lesson
- Weekly objectives for each class
- Emphasis on practice and active use of English language
- Homework that consolidates classroom activities.

## Facilities

- Spacious, modern classrooms, all of which are equipped with interactive whiteboards for the latest learning technology
- Self-study e-learning programme
- Free wi-fi
- Silent library with Internet access
- Computer study rooms
- Canteen/coffee bar serving snacks and hot or cold drinks

## Nationality mix of our students



Based on 2016-17 figures

## Our students

- Over 1000 students from more than 50 countries
- Average age 24
- Nationality mix changes over different time periods, but our academic team aims to ensure there is a varied mix of nationalities in each class.

## Welcoming reception

- Friendly, helpful staff to assist with every aspect of your stay, including accommodation and welfare
- Experienced & multi-lingual enrolment team to answer any questions you may have
- 24-hour emergency number.



# Our Courses

## General English

### GE25 Accuracy & Communication Skills

Mon–Thurs: 9.15–16.00

Fri: 9.15–12.30

25 hours per week (full-time)

Minimum age: 16

Course length: 1-36 weeks

Levels: Elementary – Advanced

Class size: max 15

### GE21 Accuracy & Communication Skills

Mon–Thurs: 9.15–14.45

Fri: 9.15–12.30

21 hours per week (full-time)

Minimum age: 16

Course length: 1-36 weeks

Levels: Elementary – Advanced

Class size: max 15

### GE15 Accuracy

Mon–Fri: 9.15–12.30

15 hours per week (full-time)

Minimum age: 16

Course length: 1-36 weeks

Levels: Elementary – Advanced

Class size: max 15

### GE10 Communication Skills

Mon–Thurs: 13.15–16.00

10 hours per week (part-time)

Minimum age: 16

Course length: 1-36 weeks

Levels: Elementary – Advanced

Class size: max 15

### Focus on Accuracy

Our Accuracy Course aims to enable students to use English grammar and vocabulary correctly. It allows students to practise grammar, vocabulary, listening, reading, speaking, pronunciation and writing in a communicative environment, using a set course book. Students' progress is measured through weekly, mid-course and end-of-course tests.

### Focus on Communication Skills

This communication course aims to enable students to speak more fluently and to engage with listening and reading texts competently. Using a range of authentic materials and resources which have been adapted for language learners, students can practise their speaking, reading and listening skills. The classes also focus on pronunciation and the use of natural English, colloquial expressions and idiomatic language.

Students requiring a visa to study in the UK must choose a minimum of 15 hours per week in group classes.





## Sample programme of study for the Accuracy Course at Intermediate level

	9.15–10.45	11.00–12.30
Monday	<p><b>Skills practice: honesty</b> Students speak about honesty and read an article on this topic. Students learn vocabulary connected with crime.</p>	<p><b>Grammar: State and Action verbs</b> Students review the differences between state and action verbs. Students practise this grammar in writing and speaking.</p>
Tuesday	<p><b>Grammar &amp; Skills: Present simple &amp; Present continuous</b> Students practise their listening skills by watching an interview. They then look at the differences between present simple and present continuous. Students practise this grammar in writing and speaking.</p>	<p><b>Vocabulary: Verbs with several meanings</b> Students practise their comprehension skills by reading an article. They then look at the different meanings of a set of verbs. Students practise this vocabulary in writing and speaking.</p>
Wednesday	<p><b>Skills &amp; Vocabulary</b> Students read an article about patriotism and speak about their country and culture. Students also learn vocabulary for describing people's personality.</p>	<p><b>Grammar: Subject &amp; Object questions</b> Students look at the differences between subject and object questions and they get writing and speaking practice with this language point.</p>
Thursday	<p><b>Skills &amp; Vocabulary</b> Students practise their listening skills with a dialogue about famous people. Students learn vocabulary for talking about someone's looks.</p>	<p><b>Functional Language &amp; Pronunciation</b> Students look at natural phrases and expressions that are used to describe a person. Students also look at and practise natural intonation when making lists.</p>
Friday	<p><b>Review</b> The teacher reviews the grammar and vocabulary from the week. The students get extra practice with these points.</p>	<p><b>End-of-week progress test</b> The students take a test and it is checked afterwards. The teacher then looks at any points that were difficult for the students.</p>

## Sample programme of study for the Communication Course at Intermediate level

	1st session: 13.15–14.45 Social English & intensive skills practice with authentic texts	2nd session: 15.00–16.00 Electives: pronunciation & idiomatic language
Monday	<p><b>Social English: Going to the doctor's</b> Students learn natural phrases and useful vocabulary for making a doctor's appointment and talking about symptoms.</p>	<p><b>Idioms and Colloquial expressions: The Body</b> Students look at idioms and expressions in English connected to the body. Students practise this vocabulary in speaking.</p>
Tuesday	<p><b>Reading: Newspaper Article</b> Students practise a range of reading skills in this lesson while looking at a newspaper article about exercise.</p>	<p><b>Speaking &amp; pronunciation</b> Students speak about health and sickness. They also look at difficult consonant sounds.</p>
Wednesday	<p><b>Listening: A T.V. interview</b> Students practise a range of listening skills in this lesson while watching a T.V. interview about dieting.</p>	<p><b>Idioms &amp; Colloquial expressions: Food</b> Students look at idioms and expressions in English connected to food. Students practise this vocabulary in speaking and writing.</p>
Thursday	<p><b>Listening &amp; Speaking: A short film</b> Students practise their speaking skills as well as a range of listening skills in this lesson while watching a short film about international food.</p>	<p><b>Speaking &amp; pronunciation</b> Students speak about dieting and losing weight. They also look at confusing vowel sounds.</p>

# General English Plus

## GE15 Plus Business English

Mon–Thurs: 9.15–14.45; Fri: 9.15–12.30

21 hours per week (full-time)

Minimum age: 18 (Business English)

Course length: 2-12 weeks

Minimum levels: Intermediate (Business English)

Class size: max 15

These lessons cover a wide range of business language skills, including the language of presentations, seminars, conferences and meetings, and describing tables and graphs. They also focus on speaking naturally in social situations, making appointments, corresponding by email and understanding commercial documents.

## GE15 Plus One-to-One

Mon–Fri: 9.15–12.30

Plus afternoons 5 or 10 hours of one-to-one lessons

20 or 25 hours per week (full-time)

Minimum age: 16

Course length: 1-36 weeks

Levels: Elementary – Advanced

Class size: max 15 (am) + one-to-one (pm)

This flexible course enables students to combine GE15 with one-to-one tuition in order to maximise their language learning.



‘Studying English at KAE is amazing!  
The teachers helped me to learn so much and  
I made many friends from all over the world.’

Insiya (Madagascar), student

## One-to-One English

### One-to-One English

Mon–Fri

2 + hours per week  
(full-time or part-time)

Minimum age: 16

Course length: 1 week +

Levels: Beginner +

Class size: one-to-one

One-to-one tuition is the most effective and rapid method for a student to improve their spoken and written command of the English language. From the start of the programme the teacher works with the student to design an individual plan that meets the student's needs and caters for their specific language requirements. Students can choose to study general English or from a range of subject areas such as:

- Business English
- English for Medical Purposes
- Exam Preparation
- Legal English
- English for the Oil and Gas Industry
- English for Engineering

## 30+ General English

### 30+

Mon–Fri

25 hours per week (full-time)

Minimum age: 30

Course length: 1 week +

Levels: Elementary +

Class size: Max 15

This course is a 25 hour programme where the students focus on vocabulary and useful language to improve their spoken fluency in English. In the afternoons students get to enjoy the social side of London as they are taken to see some of the most famous and most beautiful places by a teacher. Here they can meet new people, improve their knowledge of English culture and history as well their language skills.

'I spent 3 weeks at KAE  
and really improved my  
English in that time.'

Estelle (Switzerland), student



# Exam Preparation

All our exam preparation courses focus on strategies and techniques that the students need to employ to be successful in all parts of their exam: reading, writing, listening, speaking and use of English in Cambridge Exam Preparations. Please see start dates on website for all exam courses.

## Trinity ISE I Exam Preparation

Mon–Fri: 3 sessions per week  
4.5 hours per week  
(subject to demand)

Minimum age: 18  
Course length: 2-12 weeks  
Minimum level: Pre-Intermediate +  
Class size: max 15

## IELTS Exam Preparation

Mon–Thurs: 9.15–12.30  
15 hours per week  
(subject to demand)

Minimum age: 16  
Course length: 4-8 weeks  
Minimum level: Intermediate +  
Class size: max 12

## Cambridge Exam Preparation (FCE & CAE)

Mon–Fri: 9.15–12.30  
60 hours  
(subject to demand)

Minimum age: 16  
Course length: 3 weeks  
Minimum level:  
Upper-Intermediate+  
Class size: max 12

## Trinity ISE I Exam

The ISE is an internationally recognised exam which tests all English language skills: reading, writing, speaking and listening. The exam is divided into two modules: the reading & writing module and the speaking & listening module. This course is ideal for those who need to take the ISE I for visa purposes or for private hire drivers who are applying for a new licence or renewing their existing one.

## IELTS Exam

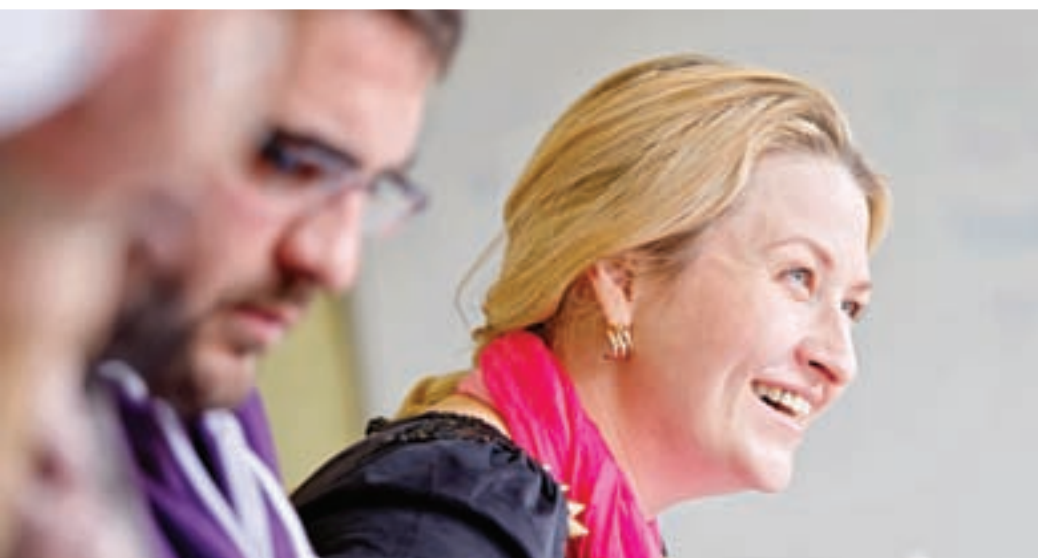
The International English Language Testing System (IELTS) is universally recognised as proof of the required level of English for entry to English-speaking universities. For more information please see [www.ielts.org](http://www.ielts.org)

## Cambridge Exams

The University of Cambridge ESOL Examinations, Cambridge First (FCE) and Cambridge Advanced (CAE), are internationally recognised Certificates that demonstrate your abilities in the English language. Our School is not an exam centre, but we can help you to book your exam when you enrol. Exam fees are not included in the course fees. Please see our website for more information about the course start dates and the examination dates.



For further information about any of our courses, please call us on **+44 (0)20 7221 6665**. We can also advise you about exam dates.



‘My teacher  
helped me  
to build my  
confidence.’

Ardita (Kosovo), student





# Your Progress

## Six Steps



The Common European Framework of Reference for Languages (CEFR)

### A1 Elementary

TOEFL score 400/97  
TOEIC score 130-250

### A2 Pre-Intermediate

Cambridge ESOL main suite: KET  
TOEFL score 400/133  
TOEIC score 255-400  
IELTS score 3.5-4

### B1 Intermediate

Cambridge ESOL main suite: PET  
TOEFL score 500/173  
TOEIC score 405-520  
IELTS score 4.5-5

When you reach B1 level you can take Business English and you can study IELTS courses

### B2 Upper-Intermediate

Cambridge ESOL main suite: FCE  
TOEFL score 550/213  
TOEIC score 525-780  
IELTS score 5.5-6

### C1 Advanced

Cambridge ESOL main suite: CAE  
TOEFL score 600/250  
TOEIC score 785-955  
IELTS score 6.5-7.5

### C2 Proficiency

Cambridge ESOL main suite: CPE  
TOEFL score 670/293 and over  
TOEIC score 960 +  
IELTS score 7.5 +

### 1. Placement test

You will be asked to complete an online placement test before your arrival which covers grammar and vocabulary. On your first day you will be greeted by a member of our academic team to complete a listening and speaking skills assessment.

### 2. Initial feedback

After your first day, you will have a brief meeting with the Director of Studies to ensure that you were placed in the correct level and that you feel satisfied with your group.

### 3. Weekly tests

For full time English courses, every week you will take a short progress test based on the grammar and vocabulary that you have studied that week. This is to ensure that you keep improving.

### 4. Tutorials

In the third and the ninth week of the course, you will have a formal tutorial with your teacher, where your welfare and your learning goals are discussed. In these tutorials, your teacher will give you advice on how to keep progressing and achieve your aims.

### 5. Mid-course test

In the sixth week of the course you will take a longer exam which tests grammar, vocabulary, listening, reading, writing and speaking. This is to assess your understanding of the content covered in the course so far.

### 6. End-of-course test

In the twelfth week of the course you will take a final exam which tests grammar, vocabulary, listening, reading, writing and speaking. This is to assess your understanding of the content covered at your particular level. Upon passing this exam, you will progress to the next level.

‘When I joined KAE I didn’t know a word of English. After 6 months of studying here I scored 6 in IELTS!’

Anis (Algeria), student

# Social Activities

**At KAE we believe social activities are an important part of learning a language.**

We offer a weekly Social Programme to suit all tastes. The programme is packed with student get-togethers, sports, trips to museums and historical buildings, attractions and cultural events, as well as weekend excursions to destinations outside London, such as Stonehenge, Oxford and Cambridge.

Our Social Programme is designed to encourage you to practise your English language skills and to help you meet new people while exploring London.

Each week at least two activities are free of charge, including a Welcome Walk on your first day to introduce you to the local area. All trips are accompanied by a member of our staff.

Our Social Programme Organiser is on hand to offer advice on how to explore London on a budget and to give you information on specific areas of interest. Special seasonal events are organised throughout the year, offering students a dynamic insight into the United Kingdom's different cultures and traditions.

## Sample Social Programme\*

<b>Monday</b>	14.00–15.00 Welcome Walk around Tower Hill	
<b>Tuesday</b>	13.30 River cruise	17.00 Cinema trip
<b>Wednesday</b>	13.30 British Museum	
<b>Thursday</b>	13.30 Tower of London	17.00 Pub evening (over 18s only)
<b>Friday</b>	13.30 Madame Tussauds	
<b>Saturday</b>	9.00 Day trip – Bath and Stonehenge	

\* Please contact us to confirm costs, dates and other details.





# Academic Activities

**In addition to our Social Programme, we offer a number of free weekly academic activities in which students of all English levels are welcome to participate.**

Our academic activities are designed to support your studies and to encourage you to practise English with a member of our teaching staff.

## **Conversation Class**

This class is designed to give you extra conversation practice. It is also a great chance to make new friends and improve your fluency. For 45 minutes each week students are invited to discuss different topics of their choice and to ask questions when unsure.

## **Book Club**

Reading in English helps to accelerate your progress. Students are able to borrow specific books for EFL learners, exchange them on a weekly basis and meet other students for suggestions on what to read.

## **News Review**

At our News Review we focus on vocabulary. All participants take an article from the local newspaper and discuss the vocabulary and issues within the article. This is an open discussion for 30 minutes each week with a member of our teaching staff there to guide it.

‘At KAE all the great academic activities really helped me to improve my English and enjoy my time in London.’

Arzu (Turkey), student



# Your First Week

## Arrival

Details of how to reach your accommodation and the College by public transport will be sent to you before your course begins. If you prefer, we can arrange a meet-and-transfer service from the airport or station to your accommodation.

Before your course begins you will be asked to sit a placement test. On arrival you will receive a welcome pack with a KAE social programme, a current guide to events in London, invitations to the News Review and Book Club, and the e-learning membership login.

‘My trip to KAE was the first time I had travelled alone. I was very nervous, but on my first day the excellent staff made me feel as if I were at home with my family.’

Ghalia (Syria), student

## Welcome Meeting

On your first day there is a welcome meeting for all new students, where you will be introduced to our team and taken on an orientation tour of the building and a walk around the local area.

## First Class

After the placement test, you will attend your class, where you will have the opportunity to start speaking English and to get to know your teacher and your classmates. You will be given homework every day to help you remember what you have studied and to prepare you for the next day's lessons.

## Social and Academic Activities

You will be invited to join our Social Programme, with events every afternoon or evening, and to take part in Conversation Class, News Review and Book Club every week.

## Student Welfare

Our learners (16+) are treated as adults and are expected to look after themselves. However, we recognise that the experience of living and studying independently in another country can be challenging, and we aim to provide plenty of help and support. In addition to the initial feedback session in the first week, all our students have a tutorial with a teacher every six weeks to help with academic or general welfare. The Welfare Officer, Accommodation Officer, Social Programme Organiser, Director of Studies and College Manager are all available to help with any difficulties you may have or to give advice to make your stay with us as comfortable, enjoyable and productive as possible. The door is always open and we are here to help. There is also a 24-hour helpline for emergencies.

## Kensington e-Learning Centre

You can access our e-learning centre for one year from your date of registration on a KAE course, so you can continue to practise and improve your English after your course has ended. You will receive your e-learning login in your first week.

‘From my first day at  
KAE, all the staff were  
very kind and attentive.’

Gerard (Spain), student





Penywern House

# College Accommodation

**Finding good-quality, affordable accommodation in London can be difficult. We can advise you on student accommodation in London and before you arrive here we will help you find a place to stay.**

We have a wide selection of rooms in affordable self-catering accommodation all located in Central London (Zones 1-2). We also offer one-bedroom flats in Zone 1 and half-board homestay accommodation. All our accommodation options are available all year round.

## Student Residences

The benefits of living in a student residence include independence and the opportunity to make friends with people from all over the world. See pages 22-23 for information about all our student residences. Details of how to reach your accommodation by public transport will be sent to you before your course begins.

## Homestay

Homestay accommodation offers you an excellent opportunity to practise and improve your language skills

during your stay. It is also great way to experience British culture.

Homestay providers are specially selected for their friendly, caring attitude towards overseas students and it can be a comforting environment, especially for younger students. The average travel time to the College is 40 minutes by public transport.

If you would like to book a homestay, please contact us as soon as possible, as demand is high. See page 24 for further information about homestays. Please note that we use a British Council recognised agency to provide this type of accommodation.

## KAE Residences: key features

### Choose from:

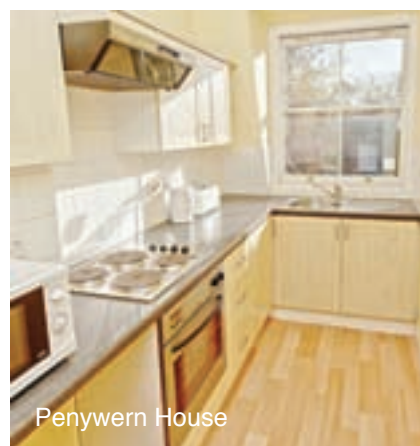
- one-bedroom apartments
- basic/en-suite single rooms
- shared rooms
- studio rooms

### Central London:

- Aldgate
- South Kensington
- Shepherd's Bush
- Earl's Court
- West Kensington
- Fulham Broadway

### Well equipped:

- private cooking facilities, in some rooms
- shared laundry services
- free wi-fi connection
- en-suite bathroom, in some rooms
- accommodation Warden, employed by the College



# Student Residences

## Shepherd's Bush House

Self-catering

🚫 Shepherd's Bush

Travelling time to the College:  
approx 35 minutes

---

**Minimum Age** 18

**Minimum Stay** 1 week

**Rooms** Single and twin rooms

**Bathroom Facilities** Shared  
bathrooms

**Kitchen Facilities** Fully equipped  
kitchens

**Internet** Free wi-fi

**Cleaning, Linen & Laundry**

Bed linen is provided and is  
changed every two weeks. Towels  
are not provided. A coin-operated  
laundrette is available.

**Other Facilities** Each room has its  
own fridge and TV.

**Warden** Night warden available

**Cancellation Policy & Guest**

**Policy** Two weeks prior to arrival.  
Students may not have guests  
without making a booking for them  
in advance.

**Arrival** Check-in is between  
12.00-21.00. Check-out before  
10.00.



## Penywern House

Self-catering

🚫 Earl's Court

Travelling time to the College:  
approx 30 minutes

---

**Minimum Age** 18

**Minimum Stay** 1 week

**Rooms** Single and twin rooms

**Bathroom Facilities** Shared  
bathrooms. Some rooms have  
private showers.

**Kitchen Facilities** Fully equipped  
kitchens. Some twin rooms have  
cooking facilities.

**Internet** Free wi-fi

**Cleaning, Linen & Laundry**

Bed linen is provided and is  
changed every two weeks. Towels  
are not provided. A coin-operated  
laundrette is available.

**Other Facilities** Each room has its  
own fridge and TV.

**Warden** Night warden available

**Cancellation Policy & Guest**

**Policy** Two weeks prior to arrival.  
Students may not have guests  
without making a booking for them  
in advance.

**Arrival** Check-in is between  
12.00-21.00. Check-out before  
10.00.



## Fairholme House

Self-catering

🚫 West Kensington

& Barons Court

Travelling time to the College:  
approx 40 minutes

---

**Minimum Age** 18

**Minimum Stay** 1 week

**Rooms** Standard or ensuite single  
rooms, twin rooms and studios

**Bathroom Facilities** Shared  
bathrooms. Some rooms have  
private bathrooms.

**Kitchen Facilities** Fully equipped  
kitchen. Some rooms have cooking  
facilities.

**Internet** Free wi-fi

**Cleaning, Linen & Laundry**

Bed linen is provided and is  
changed every two weeks. Towels  
are not provided. A coin-operated  
laundrette is available.

**Other Facilities** Each room has  
its own washbasin, TV, kettle and  
fridge.

**Warden** Night warden available

**Cancellation Policy & Guest**

**Policy** Two weeks prior to arrival.  
Students may not have guests  
without making a booking for them  
in advance.

**Arrival** Check-in is between  
12.00-21.00. Check-out before  
10.00.



## Dawes House

Self-catering

🚫 Fulham Broadway

Travelling time to the College:  
approx 45 minutes

---

**Minimum Age** 18

**Minimum Stay** 1 week

**Rooms** Single rooms, twin rooms  
and studios

**Bathroom Facilities** Shared  
bathrooms

**Kitchen Facilities** Fully equipped  
kitchen. Some rooms have cooking  
facilities.

**Internet** Free wi-fi

**Cleaning, Linen & Laundry**

Bed linen is provided. Towels are  
not provided. A coin-operated  
laundrette is available.

**Other Facilities** Each room has its  
own washbasin, TV, kettle and  
fridge. There is also a common  
room for students in the House.

**Cancellation Policy & Guest**

**Policy** Two weeks prior to arrival.  
Students may not have guests  
without making a booking for them  
in advance.

**Arrival** Check-in is between  
12.00-21.00. Check-out before  
10.00.



## The Curve

Self-catering

🚫 Aldgate & Aldgate East

Travelling time to the College:  
approx 10 minute walk

---

**Minimum Age** 18

**Minimum Stay** 1 week

**Bathroom Facilities** Private  
bathroom in each room

**Kitchen Facilities** Fully equipped  
kitchen in each flat

**Internet** Free wi-fi

**Cleaning, Linen & Laundry**

Rooms are cleaned every week.  
Bed linen is provided which you  
are responsible for. There is a coin  
operated laundrette within the  
building.

**Other Facilities** Access to  
communal games and TV rooms.  
Free gym membership is included.

**Cancellation Policy & Guest**

**Policy** Two weeks prior to arrival.  
This residence operates a no  
guests policy.

**Arrival** There is a 24 hour  
reception. Check in must be after  
15.00 and check out before 10.00.  
Please note there is a 4 week  
cancellation fee.



## Fulham Flats

Self-catering

🚫 South Kensington  
& Gloucester Road

Travelling time to the College:  
approx 30 minutes

---

**Minimum Age** 18

**Minimum Stay** 1 week

**Bathroom Facilities** Private  
bathroom in each flat

**Kitchen Facilities** Fully equipped  
kitchen in each flat

**Internet** Free wi-fi

**Cleaning, Linen & Laundry**

Bed linen is provided and is  
changed every two weeks. Towels  
are not provided. There is a  
washing machine in each flat.

**Other Facilities** Fully furnished  
living room with TV.

**Cancellation Policy & Guest**

**Policy** Two weeks prior to arrival.  
Students may not have guests  
without making a booking for them  
in advance.

**Arrival** Check-in is between  
12.00-21.00. Check-out before  
10.00.



# Homestay

## Homestay

Full & Half-board

 Zones 2-4

Average travelling time to the College: approx 30 minutes

**Minimum Age** 16

**Minimum Stay** 1 week

**Rooms** Single rooms

**Location** Our host families are located in London Zones 2-4.

**Bathroom Facilities** Shared or ensuite

**Meals and Kitchen Facilities**

Breakfast and dinner are provided.

Breakfast is included in full-board bookings.

**Internet** Most homestay providers have Internet access, but please request this when you book.

**Cleaning, Linen & Laundry**

Bed linen is provided. Towels are not provided.

**Cancellation Policy & Guest Policy**

Two weeks prior to arrival. Students may not have guests.

**Arrival** Check-in is between 12.00-21.00. Check-out before 10.00.

‘I loved my host. She helped me to improve my English.’

Alessandro (Italy), student



‘I improved my English a lot communicating with friends and living day-to-day in student accommodation.’

Sinan (Turkey), student



# How to Enrol

You can enrol by one of the following methods:

## Online

You can book your course online by completing the enrolment form on our website at [www.kensingtonacademy.com](http://www.kensingtonacademy.com)

## In person

You can enrol in person at the College Reception during office hours (9.00-17.00, Monday to Friday).

## Through your agent

You can also enrol through your agent in your country.

## By post

You can enrol for all our courses by post at any time. Complete the enrolment form enclosed with our brochure and return it to us.

Kensington Academy of English  
31 Jewry Street  
London EC3N 2ET  
United Kingdom

Tel: +44 (0)20 7221 6665  
Fax: +44 (0)20 7243 1730  
[nhg@kensingtonacademy.com](mailto:nhg@kensingtonacademy.com)  
[www.kensingtonacademy.com](http://www.kensingtonacademy.com)

Please read our terms and conditions carefully before booking your course.  
Please call us on +44 (0)20 7221 6665 for more information.



# How to Find KAE

**Just a short walk from Tower Hill, Aldgate and Liverpool Street underground stations.**

The College is in a truly unique setting, close to the heart of the City of London, near historic buildings such as the Tower of London, the Bank of England, St Paul's Cathedral as well as the modern and iconic

buildings of the City like the Shard and the Gherkin.

Not only is London's history on its doorstep, but KAE is close to a number of popular shopping areas, such as Old Spitalfields Market, Westfield Stratford City and one of London's most renowned food and drink markets, Borough Market.

The Kensington Academy of English (KAE) is conveniently located in Central London



Excellent transportation options surround KAE and it is only a short bus or underground journey away from London's many mainline train stations. It is also quick and easy to reach, via express train and underground, from the major London airports of Gatwick and Heathrow.

Accommodation is provided in KAE's own residences in attractive Central London locations (Zone 1 or 2), conveniently located within easy access to the College. Direct links with the Central, Circle and District lines from our accommodation to the college allow for an easy commute.



**Kensington Academy of English**  
31 Jewry Street, London EC3N 2ET

#### London Landmarks

- 1 The Tower of London (500m) & Tower Bridge (600m)
- 2 City Hall (900m)
- 3 The Shard (1,150m)
- 4 The Walkie Talkie (500m)
- 5 St Paul's Cathedral (1,500m)
- 6 The Cheesegrater (400m)
- 7 The Gherkin (300m)



**Kensington Academy of English  
is a division of David Game College**

Accredited by the



for the teaching  
of English in the UK



**Kensington Academy of English  
31 Jewry Street  
London EC3N 2ET  
United Kingdom**

Tel: +44 (0)20 7221 6665 Fax: +44 (0)20 7243 1730

Email: [nhg@kensingtonacademy.com](mailto:nhg@kensingtonacademy.com)

[www.kensingtonacademy.com](http://www.kensingtonacademy.com)