

Albemarle

ALBEMARLE INDEPENDENT COLLEGE

2016-17

***“Education is not
preparation for life -
education is life itself”***

John Dewey, Philosopher, Psychologist and Educator

“Albemarle... our top
independent Sixth Form
College in central
London for the
past 8 years ”



Les Webb
www.sixth-form.com



SIXTH-FORM.COM

Source: 2015 Results Table published by sixth-form.com,
the leading independent schools and colleges website



**Independent Schools Inspectorate
Inspection Report**

**ALBEMARLE
INDEPENDENT COLLEGE**

March 2016

*“The college EXCEEDS expectations
for the Quality of Education”*

Curriculum, Teaching and Learners’ Achievements

The quality is **“EXCELLENT”**

Students’ Welfare, Health and Safety

The quality is **“EXCELLENT”**

Effectiveness of Governance, Leadership and Management

The quality is **“EXCELLENT”**



Contents

- 5** Contents
- 6** The Albemarle Ethos
- 8** The Principals
- 10** Teaching, Assessment and Reporting
- 12** The New A-levels - What You Should Know
- 14** The AS-level Programme
- 16** The One-year A-level Programme
- 18** The GCSE Programme
- 20** Preparing for Life
- 22** Specialist Programmes for University Entry
- 24** Work Experience
- 26** Extra-Curricular Activities
- 28** What Our Students Say...
- 30** A-level subjects
- 31** GCSE subjects and Specialist Courses
- 32** Fees and Dates
- 34** Our Location



*"a modern college with...
... a traditional approach"*

The Albemarle Ethos

Based in the heart of Mayfair in central London, Albemarle is a top performing independent sixth-form college, offering a broad A-level and GCSE curriculum for students from public, state and private school backgrounds.

Why Choose Albemarle?

The majority of students who come to Albemarle do so because of our reputation for excellent A-level and GCSE results. This is true of students both on our full two-year programme, as well as those on the one-year intensive programme. Most students will progress on to a top 20 UK university.

Students are taught very much by traditional methods, in small groups, concentrating on the skills needed to pass examinations and to be successful at university. All teachers at Albemarle are subject specialists and most have experience as examiners. They are particularly successful with young people: they are able to motivate and communicate with them in ways which they understand. Barriers are quickly broken down, enhancing the learning process.

How Do We Get The Best Out Of Our Students?

Students benefit from individually tailored attention outside of classes – a key element of our successful A-level and GCSE programmes, and at Albemarle each student has a Curriculum Manager and a Personal Tutor, who provide advice on study skills, subject choices and careers, and who also monitor progress in regular meetings with students.



We expect full commitment from our students and as such we have strict rules on attendance and timely submission of assignments. Parents are able to monitor progress through monthly reports, easily accessible using our online reporting system. Parents' Evenings are held during the Autumn and Spring terms.

We encourage our students every step of the way and we help them to build confidence through examination success. We see the learning process as a successful partnership between students, tutors and parents.



MOHNISH SHARMA
Head of Economics

"We teach students how to develop their powers of analysis and independence of thought - crucial to success at university and beyond."



Principals, Beverley Mellon & James Eytel



Stephen Bailey, Vice Principal



Ashley Richardson, Director of Studies



Tracy Higgins, Welfare Officer

***“excellent exam results ...
... top UK university placements”***

The College Principals

Albemarle's founders and Principals, Beverley Mellon and James Eytel, had two key objectives when establishing the college: achieving excellent examination results and success in placing students at the top UK universities.

Beverley and James have used their considerable experience in teaching and careers counselling to guide students in choosing the right subjects and selecting the career path that best fulfils their needs.

Beverley entered the teaching profession having trained initially as an Accountant and retains strong links with the banking and accounting sectors, useful for mentoring students wishing to enter these professions. She is a graduate in Maths & Computer Science from Cardiff University.

James read Biochemistry at King's College, and maintains his connections to the world of medical and pharmaceutical training, providing practical guidance and advice to candidates with aspirations in these areas. James is responsible for overseeing the college's highly successful Medical Sciences programme including the International Medical & Dental programme which provides routes to training in Europe.

James and Beverley share vast experience in liaising with university admission officers and have established a close network of contacts in the university sector. They teach Chemistry and Maths



respectively, and as such, realise what it takes to get the best out of students. They are approachable and accessible to both students and parents throughout the year. The two Principals act as Curriculum Managers to students, overseeing their study programmes and offering advice on degree courses and career goals.

The Vice Principal, Stephen Bailey, a graduate of the University of Nottingham, is responsible for the smooth running of the academic calendar, as well as acting as a Curriculum Manager, providing careers advice and mentoring students wishing to embark on careers in Law or Politics. Steve also teaches Sociology and is responsible for the Social Sciences department at Albemarle.

The Director of Studies, Ashley

The Principals act as Curriculum Managers to students overseeing their academic programme, providing help and guidance.

Richardson is a graduate of Cambridge University and has special responsibility for overseeing applications to Oxbridge. Ashley teaches A-level Philosophy and Psychology and oversees the running of the Humanities and Foreign Languages departments.

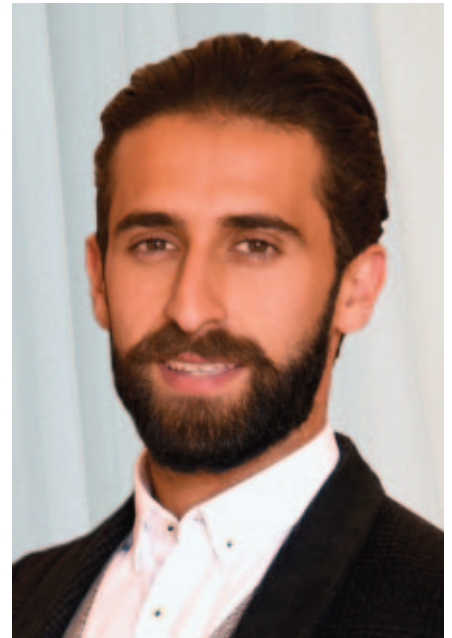
Tracy Higgins is the College's Welfare Officer and is often the first person that students seek out for help with matters outside of their academic studies. Tracy also oversees the pastoral care of our international students, keeping in regular contact with parents and guardians, and inspects accommodation to ensure that high standards are maintained



Ness Alkasab,
College Administrator



Chris Mason,
Finance Administrator



Mohammed Aneizi,
Marketing and Information Officer

***“student-centred tuition ...
... focusing on the individual”***

Teaching, Assessment and Reporting

Students at Albemarle benefit from the small class sizes, on average five students in each class. Tuition is very much centred on the students, who are encouraged to participate fully and, most importantly, to think for themselves.

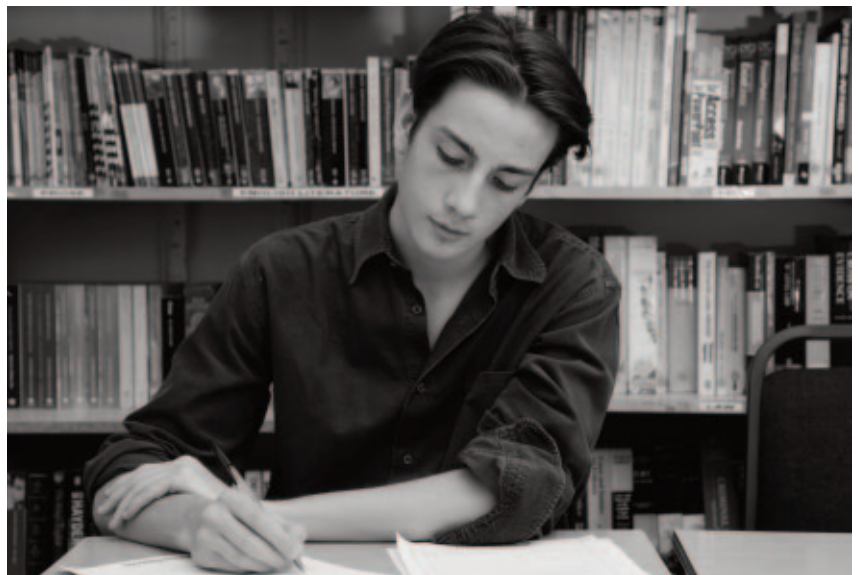
Our teachers are all highly qualified specialists in their subject area. They use a mixture of motivation, encouragement and confidence building to get the best out of students. Teachers focus on examination techniques and make extensive use of past examination questions.

Classes are timetabled in 75 minute sessions between 9.00am and 5.45pm, although most days end at 4.15 for the majority of students. The college remains open daily until 7.00pm on weekdays and is also open on Saturdays.

Students are expected to take notes during class, with homework being assigned at the end of each lesson. Students must complete all assignments on time and we monitor all coursework carefully to ensure that students meet their deadlines.

Our ongoing assessment programme features weekly tests in each subject and formal mock examinations once a month. Experience demonstrates that regular testing is vital for improving examination performance.

Students who underperform in mocks are timetabled into supervised study sessions and given additional

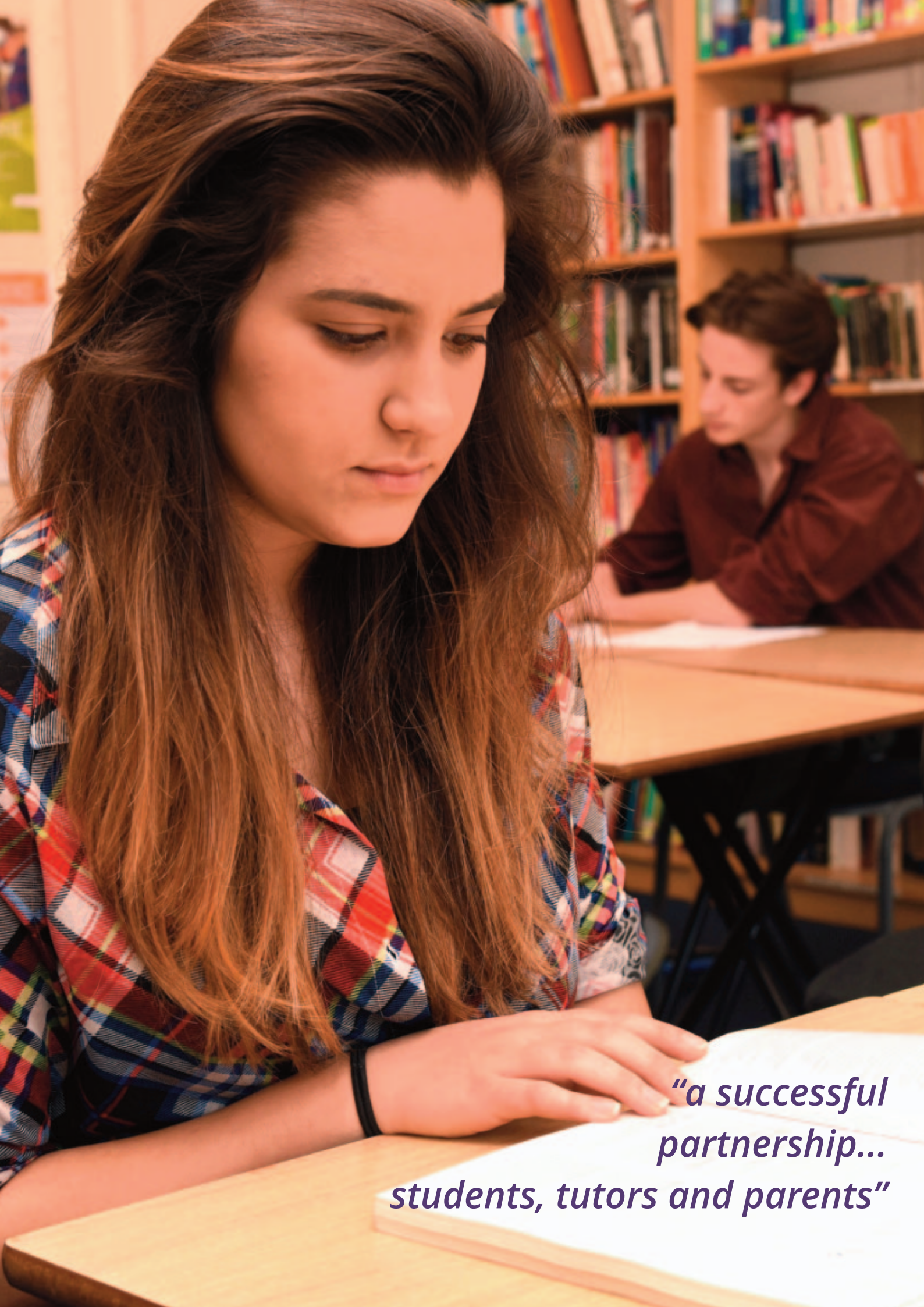


help outside of classes by their subject teachers. They are also coached in study skills and exam techniques, and given advice by their Personal Tutor as to how best improve their performance.

Formal reports are compiled each month and these are accessible online in the password-protected secure area of our website. Parents and students can also view previous reports for comparison. Each student is assigned their own password to view their own reports. Personal Tutors also maintain regular contact with parents and guardians on an informal basis.

Weekly tests and monthly Mocks are key elements of the academic programme at Albemarle.

Parents' Evenings are held in the Autumn and Spring terms, when parents are able to discuss a student's progress with their subject tutors and Principals. During half-term periods students are provided with revision packs, but they can also come into the college for extra lessons if needed. All students are able to take courses on the college's highly successful Easter Revision programme in April at no extra cost. The college also provides dedicated courses to help students with essay-writing and numeracy.



*“a successful
partnership...
students, tutors and parents”*

The New A-levels - What You Should Know

A-levels are undergoing the most significant transformation since the introduction of the Advanced Subsidiary levels or AS-levels over 10 years ago. The reforms were brought in to stem “grade inflation” and make A-levels tougher. The key elements of the reforms are as follows:

- AS-levels and A-levels are being decoupled which means that AS-level marks will no longer count towards the final A-level grade.
- Students can still do AS-levels but they will be a stand alone qualification, completed at the end of the first year of sixth-form.
- Some schools may not offer AS-levels at all eventually, since they will no longer count towards the final A-level grade and as such AS-levels may become less important in helping universities to decide whether to make an offer to a student.
- The content of all A-level subjects are being overhauled and some subjects such as Home Economics and Human Biology, will no longer be offered.
- The new A-levels will be linear, rather than modular as at present, which means that students will sit final exams only at the end of their 2 year period of study which count towards their final grade.
- The changes to A-levels are being phased in over 3 years which means that some subjects have new A-levels from September 2015 and others will follow the old system until later. So for example, Biology, Chemistry, Physics, Business, Economics, English, History and Psychology have new A-levels from



September 2015; French, German, Spanish, Religious Studies and Geography from September 2016; Mathematics and Government & Politics from September 2017.

- There are significant changes to coursework and in some subjects like the sciences, the practical coursework element will be compulsory but will not contribute to the overall final grade as it does at present.

Albemarle intends to continue to offer AS-levels for the foreseeable future as most universities still find it useful to see how students have performed in their first year of sixth-form. More information on the new system can be found on the GOV.UK website under “Get the Facts: AS and A-level reform”.



JOCELYN STOCKBRIDGE
Deputy Head of Maths

“At Albemarle students are given help and support outside of classes to enable them to overcome difficulties, paramount in a challenging subject like Maths.”

“Weekly University & Life Skills classes are a key part of the AS-level programme”



The AS-level Programme

The Advanced Subsidiary or AS-level exams were introduced to address the lack of flexibility in the post-16 curriculum and to encourage broader programmes of study, encompassing key skills in numeracy, communication and information technology.

The AS-level is a qualification in its own right, equivalent to half an A-level, and students generally complete their AS-levels in the first year of a two year A-level programme.

New AS and A-levels are being phased in over 3 years starting in September 2015. Further information on this can be found on the GOV.UK website using the link or QR code in the panel below.

Most Lower Sixth students at Albemarle will take four subjects at AS level, but the flexibility of our AS programme allows us to accommodate students wishing to take two or as many as five AS-levels, across a wide range of subjects.

All students on the AS-level programme have weekly University & Life Skills (ULS) classes which include sessions on presentations, public-speaking, CV writing and job interviews, as well as covering all aspects of the university application process. We also invite guest speakers from a wide range of professions including Law, Journalism, Engineering,



Medicine and Investment Banking, to give seminars to our Lower Sixth students as an integral part of the ULS programme.

A wide range of sporting activities is provided during the weekly sports session on Wednesday afternoons, including football, basketball, badminton, tennis, dance aerobics, swimming and body-building.

During the Spring half-term all Lower Sixth students are invited to take part in the college cultural trip to a European city of

interest. This is an immensely popular and enjoyable experience for students. Recent destinations have included Florence & Venice, Athens, Seville & Granada, Rome and Istanbul.

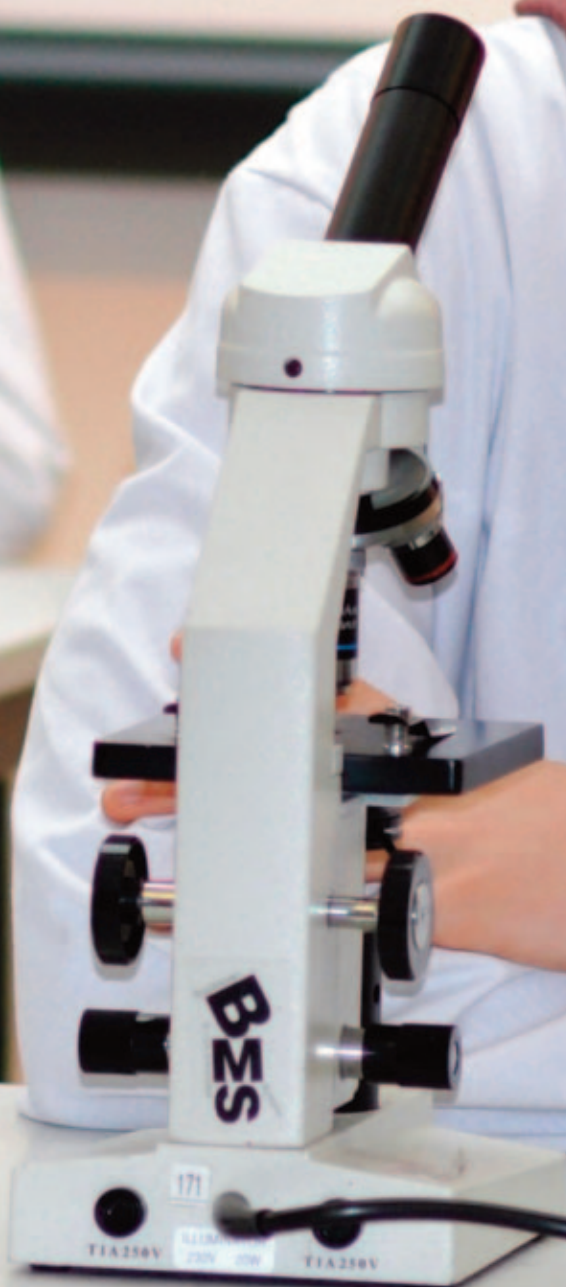
Teachers make the most of the college's excellent location in the heart of London and students are frequently taken on visits to places linked to their academic programme such as the Wellcome Institute, Natural History Museum, British Museum, Photographer's Gallery, the Wallace Collection as well as to attend lectures at UCL, LSE, Imperial and the Royal Society of Science.



AS and A-level Reforms

www.gov.uk/government/publications/get-the-facts-gcse-and-a-level-reform/get-the-facts-as-and-a-level-reform

*“strategic
planning is
crucial ...”*



The One-year A-level Programme

The one-year A-level courses are designed for students who wish to complete a full A-level in one year starting from scratch. Students will need to show aptitude for the subject and, in some cases, must have studied the subject to GCSE level or equivalent.

Most students on this programme will have already completed one or two years of A-level study, but need to improve their grades to get onto their chosen degree course. Retake students on this programme will need to achieve higher A-level results than their first time counterparts, so it is essential that they get it right the second time round.

Students are able to achieve success on this programme not simply because of the excellent tuition at Albemarle, but also because of the support and help they receive outside the classroom from subject teachers as well as their Curriculum Manager.

Our Curriculum Managers have a wealth of experience dealing with students undertaking A-levels in a year and the advice they give is tailored to suit the needs of each individual. We are able to call on a vast network of contacts at universities to assist us in getting students onto the degree course of their first choice at a good university.

Curriculum Managers offer advice to students on an individual basis helping them with all elements of the UCAS admission process from the production of a uniquely attractive personal statement to the finishing touches to the online forms and mock interviews. These are completed by early October, to give students the best possible



Students benefit from support outside the classroom and supervised study sessions.

chance of receiving offers for their first choice university.

In the past academic year, students on our one-year programme have achieved places at many of the top UK universities including Cambridge, Imperial, UCL, LSE, Warwick, Edinburgh, Bristol and Durham.

We can also count a number of doctors, dentists, accountants, computer scientists, lawyers, journalists, to name but a few professionals, among our past students on this programme.



ROSEMARIE TAYLOR
Head of Art & Design

"In addition to Art & Design, we also offer Photography and History of Art at A-level. Our Summer programme in Fine Art and Architecture, in collaboration with London art schools, is also very popular."



*“highly structured programme...
... encompassing Life Skills”*

The GCSE Programme

Students who join us to study GCSEs enrol on the one-year intensive programme or the two-year programme. Some will be retaking GCSEs and it is possible in certain cases to combine retaking GCSEs with starting AS-levels.

Our GCSE students come from a wide variety of backgrounds, attracted by our reputation for achieving excellent examination results and the very individual support and attention they will receive at Albemarle.

All GCSE programmes are highly structured and lessons are generally timetabled between 9.00am and 4.15pm every day. Classes are of 75 minutes duration and study sessions are also timetabled during which students are able to complete homework or coursework. The core curriculum for most GCSE students includes English, Mathematics, Information Technology (under Business Communications) and Science subjects. Other popular subjects are Foreign languages, Art, Photography, History and Geography. A full list of GCSE subjects on offer at Albemarle can be found on page 31.

The Head of GCSE acts as Personal Tutor to all GCSE students, closely monitoring student progress and maintaining regular contact with parents or guardians.

Towards the end of the academic year GCSE students may begin to consider A-level choices – the Head of GCSE and Curriculum Managers are on hand to offer advice and guidance throughout the decision-making process.



Our GCSE Life Skills sessions offer a weekly opportunity for all GCSE students to visit a site of interest or to take part in a workshop, debate or exercise organised by a dedicated tutor. Often these visits relate directly to the syllabus, such as a visit to the Globe Theatre as a part of our English GCSE programme.

GCSE students are also encouraged to take part in the college's wide-ranging extra-curricular and sports programmes, although sport is not compulsory.

Our main objectives are to empower students to obtain the best possible GCSE grades through expert tuition in an environment that encourages hard work, independence of thought and examination success, and to build the right foundation for students to progress on to A-level study.



TAUHIDA RAQUIB
Head of GCSE

"GCSE students benefit from the small class sizes at Albemarle, on average 4 - 5 students per class, and the individual support and guidance they get outside of classes."



*“empowering students
and encouraging
independence of
thought”*

Preparing for Life

At Albemarle our two primary objectives are to empower students to achieve exam success by encouraging hard work and independence of thought, and to provide students with a foundation on which to build, encompassing careers guidance, work experience and life-skills coaching.

Careers Guidance

Each student joining the college has an initial consultation with their Curriculum Manager to establish goals and objectives, explore career options and to ensure that the correct selection of A-levels and/or GCSEs is made. This is the first stage in a careers guidance programme tailored to suit the individual student.

Personal Tutors

All students are assigned a Personal Tutor to monitor their progress and provide help and advice on academic as well as pastoral matters. Albemarle's careers guidance programme has been strengthened through partnership with a number of visiting professionals and our network of university contacts from a variety of fields.

University & Life Skills (ULS) Seminars

These sessions provide a weekly opportunity for all students to benefit from a range of activities. Visiting speakers from professions such as Medicine, Law, Banking, Engineering and Architecture lead seminars for lower sixth students; students learn techniques for isometric testing, debating, problem-solving and essay writing. Students who successfully complete this programme are



Leeds University Campus - Uni Tour 2016

awarded the ULS Diploma, another string to their bow, for the university application process.

Preparation for the Next Step

All our A-level students leave Albemarle to go on to study at a reputable university, generally in the UK and sometimes in the USA. We have a range of specialist programmes including work experience, which help to prepare students for university and beyond.

Many students find choosing the right degree course a daunting task so we equip them with the tools they need to make the right choice. We arrange university tours accompanied by Albemarle teachers and through our

extensive alumni network, students are able to gain a real insight into many different degree courses at a wide range of universities. All of our senior teachers have close connections with top universities and are available to give advice to students and providing mentoring.

The Principals themselves take an active role in career planning and arranging work experience, essential to setting students on the right path to success. When students leave Albemarle, they remain very much a part of our extended family and can call on us at any time for advice and support.



Albemarle UCAS Seminar
at UCL, June 2015



*“dedicated programmes for
Law, Medical Sciences,
Oxbridge entry”*

Specialist Programmes for University Entry

We recognise that for entry onto competitive degree courses like Law, Medicine, Dentistry, Pharmacy Psychology, English, Economics and Architecture, students need more than just a good set of A-level results. With this in mind we have developed specialist programmes to better prepare students applying to these degree courses.

An important element of most of these programmes is suitable work experience and help is given with arranging this; particularly important as a pre-cursor for entry to medical, veterinary and dental degree courses.

We collaborate closely with professionals from many different industries who visit the college to give advice and help to students wishing to pursue careers in a wide range of disciplines. Seminars on careers in law, medicine, banking, finance, engineering and architecture are key elements of the ULS programme for Lower Sixth students.

Our dedicated programmes include preparation for Oxbridge entry, summer Foundation Art programmes, BMAT, UKCAT and LNAT aptitude tests.

SPECIALIST PROGRAMMES

Medical Sciences Programme

For students wishing to apply for medicine, dentistry and veterinary science.

Social Sciences Programme

For students wishing to apply for Economics, Psychology and Law.

Oxbridge Preparation

For students applying to colleges of the universities of Oxford and Cambridge.

SAT Preparation

For students applying to American universities.

Architecture & Art Foundation

For students wishing to do degrees in Architecture, Fine Art, Interior Design and Photography.

BMAT & UKCAT Preparation

The UKCAT course focuses on strategies on how to approach the test, as well as question practise, study technique and identifying weaknesses in reasoning and decision analysis. The BMAT course covers the full range of aptitudes and skills required to take the test, as well as the Key Stage 4 core science and higher mathematics needed. For more information please see the supplementary brochure on our website.



Student Tom Wells on an Albemarle work experience placement at GSK in Philadelphia



London Live TV studios



“developing the independent, reflective, self-confident learner”

Work Experience

Work experience is a key component of our University & Life Skills programme and all students in the Lower Sixth are encouraged and aided in the process of gaining useful work experience.

For some career choices and degree courses, such as Medicine, Dentistry, Law, Veterinary Medicine, this is essential. But, more and more, we find that universities are looking to see that students have developed some of the valuable skills which can only be gained through a work experience placement – whether it be directly related to their degree course or not.

Students are taught how to compile a CV, write a covering letter and how to prepare for job interviews. They are positively encouraged to develop the interpersonal skills so crucial in today's working environment, often lost on those young people who interact almost solely through social media.

Albemarle has developed contacts with an extensive network of professionals working in Law, Finance, the Health Service, the Media and Engineering. We are therefore able to make use of this network to secure work placements for many of our students. Very often



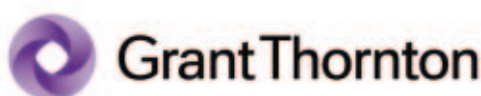
parents and guardians of current and ex-students also offer placements for our students. The ULS team at Albemarle liaises with the University of London colleges who offer Taster Courses for students seeking to enter professions like Medicine, Dentistry, Law, Pharmacy and Physiotherapy.

Students are also able to benefit from advice given to them by their Curriculum Manager.



**STUART
PRENDERGAST**
Head of Science

“Work experience is vital to students achieving places on the more competitive degree courses, but also helps them to learn important life skills moving forward.”





"wide range of sport and leisure activities"

Extra-Curricular Activities

Students are able to benefit from a wide range of sport and leisure activities provided by the college. Regular sports, including football, tennis, volleyball, basketball, swimming, badminton, gym and aerobics are played on a weekly basis at a nearby sports centre, and competitions are arranged with other schools.

We also organise a range of other activities, including orienteering and theatre trips. Each year during the Spring half-term break we arrange a cultural trip to a European city. Cities visited include Rome, Barcelona, Istanbul, Prague, Venice, Athens and Florence. This year in addition to the planned cultural trip, students will also have the option of participating in a skiing trip during the Easter holidays.



What Our Students Say



ANATOLI MEZE

A-level Grades: Maths A*, Economics A*, Further Maths A*, Sociology A.

"Albemarle has been the best experience in my life so far. The teaching staff were the key to my successful university placement at LSE. I will never forget my time at Albemarle. It combines a great location, the most talented staff and a great atmosphere which I will miss a lot. You can trust that at Albemarle the teachers focus on your success and sacrifice their time to help you master your subjects. And you will also have lots of fun as the team is just amazing!"

Anatoli is currently studying Economics at LSE.



DMITRY CHERNOV

A-level Grades: Biology A*, Physics A*, Chemistry A, Maths A, French A

"I completed my GCSEs at Albemarle before starting on my A-levels there. Firstly what amazed me was how good the teaching was across all of my subjects - the Sciences, Maths and French, and how approachable teachers were - always at hand to give me help and support, particularly outside of lessons. During my first year, the Life Skills programme really helped to boost my confidence and develop skills. My Personal Tutor James really supported me and helped me to secure a place at one of the world's top universities. I would certainly recommend Albemarle as a great place to study A-levels."

Dmitry is a recent graduate in Medicine from Imperial College, London.



YEE XING

A-level Grades: Geography A*, Economics A and Psychology A*

"Having studied abroad and in London before joining Albemarle I can honestly say the teaching at Albemarle is the best I have ever had. I believe that the teachers really care about students and help them constantly. I also liked the fact that the college had a nice mixture of local and international students so that I was able to learn more about British culture before heading off to university. I do miss Albemarle very much, even though I enjoy studying at King's."

Yee is currently studying Geography at King's College, London.



CHARLES COOPER

A-level Grades: Biology A*, Chemistry A*, Maths A*, Physics A*

"My two years at Albemarle went so quickly but they were probably the best years of my school life. The advice and support I got from my teachers and my Curriculum Manager, James helped me to great success in A-levels and my ultimate goal - a place at Oxford University."

Charles is currently studying Biochemistry at Oxford University



CLAIRE WORRALL

A-level Grades: Maths "A", English Literature "A*", French "A*", Economics "A"

"Having joined Albemarle partway through my AS year I was concerned that I would not be able to catch up with my peers. However, the teachers were amazing in helping me get up to speed and I achieved top grades in my AS-levels in my first year. The guidance and help I got were essential in helping me to secure a place at my first choice university and I am very glad that I studied at Albemarle."

Claire is currently studying Management at the University of Bath



ADEWALE ADEYOSOYE

A-level Grades: Business Studies A*, Physics A*, Maths A, Further Maths A

"I enjoyed my two years at Albemarle immensely. I liked the way teachers treated you as an individual and were always around to give me help and advice. I really enjoyed the cultural trip in my first year as it took me out of my comfort zone but enabled me to grow as a person. I am now better equipped for university as a result of my Albemarle experience."

Adewale is currently studying Mechanical Engineering at the University of Sheffield

A-level Subjects

Sciences, Computing & Mathematics

Biology (new format)
Chemistry (new format)
Physics (new format)
Computing (new format)
Information Technology
Mathematics
Further Mathematics

Business & Social Sciences

Accounting
Business (new format)
Economics (new format)
Geography (new format)
Media Studies
Politics
Psychology (new format)
Sociology (new format)

Arts, Humanities, Languages & PE

English Literature (new format)
French (new format)
German (new format)
Japanese
Russian
Spanish (new format)
History (new format)
Philosophy
Religious Studies (new format)
Art & Design (new format)
History of Art
Photography (new format)
Critical Thinking



AS and A-level Reforms

For more on AS and A-level reforms please visit the GOV.UK website: www.gov.uk/government/publications/get-the-facts-gcse-and-a-level-reform/get-the-facts-as-and-a-level-reform



GCSE & IGCSE Subjects

Sciences, Maths & Business

Biology
Business Studies
Chemistry
Physics
Mathematics
Business Communications
Business Studies & Economics

Arts, Humanities, Languages & PE

English
English Literature
French
Geography
German
Russian
Spanish
History
Religious Studies
Art & Design
Photography

Specialist Courses

These courses are free to all Albemarle students

BMAT - BIOMEDICAL ADMISSION TEST

BMAT is a subject-specific admissions test compulsory for applicants to medical, veterinary science and related courses at certain universities. (See www.bmat.org.uk for more info).

SAT PREPARATION

Students applying to US universities are often required to sit SAT tests and we provide specialist preparation courses for these at Albemarle.

UKCAT - UK CLINICAL APTITUDE TEST

The UKCAT is a compulsory aptitude test for applicants to medical and dental courses at certain UK universities. It does not contain any curriculum or science content but focuses on exploring thinking and analytical skills, attributes considered to be valuable for health care professionals. (See www.ukcat.ac.uk for more info).

Fees and Dates

A LEVEL TUITION FEES:

TWO YEAR A-LEVEL COURSES

Number of Subjects	Per Year	Term 1	Term 2	Term 3
3 subjects and optional 4th AS	£19,750	£9,750	£5,000	£5,000
2 subjects	£16,000	£8,000	£4,000	£4,000

ONE YEAR A-LEVEL COURSES

Number of Subjects	Per Year	Term 1	Term 2	Term 3
3 subjects	£22,500	£9,500	£6,500	£6,500
2 subjects	£17,500	£8,500	£4,500	£4,500
1 subject	£8,750	£4,750	£2,000	£2,000

GCSE TUITION FEES:

Number of Subjects	Per Year	Term 1	Term 2	Term 3
5 or more subjects	£19,750	£9,750	£5,000	£5,000
1 subject	£6,000	£3,000	£1,500	£1,500

ADDITIONAL FEES

International Fee Supplement	£3000 per year
Laboratory	£120 (per subject, per term)
Art & Photography materials	£120 (per subject, per term)
Registration fee	£250
Deposit	£750*
Individual tuition	£800 for a block of 10 hours

*Payable 8 weeks before the course commences and deducted from the first term's fees.

All tuition fees are payable termly, no later than the first day of term.

A-LEVEL & GCSE COURSE DATES 2016-17

	ONE-YEAR COURSES	TWO-YEAR COURSES
Autumn 2016 Half term:	8th September – 16th December 24th – 28th October	8th September – 16th December 24th – 28th October
Spring 2017 Half term:	4th January – 7th April 20th – 24th February	4th January – 7th April 20th – 24th February
Summer 2017 Half term:	19th April – 26th May n/a	19th April – 30th June 29th May - 2nd June

REVISION COURSE DATES 2016-17

Our revision courses are free to all Albemarle students

	REVISION COURSES
BMAT (1-day course)	15th October, 22nd October
UKCAT (1-day course)	2nd September

For further information on these courses please see the college website at www.albemarle.org.uk or telephone the college for a brochure.



In the Heart of Central London

Located in the heart of central London, Albemarle College is in Mayfair, just off Park Lane, close to Hyde Park and within easy reach of Marble Arch underground station.

Students benefit academically from being within a short distance of The British Library, Imperial College, St Mary's Hospital, The Institut Français, The Science Museum, The Natural History Museum and The V&A Museum.



Albemarle Independent College

**18 Dunraven Street
Mayfair
London W1K 7FE**

**Tel: 020 7409 7273
Fax: 020 7629 9146**

www.albemarle.org.uk