

A photograph of four students (three men and one woman) standing outdoors at dusk. They are wearing winter jackets and looking towards the right. In the background, a large suspension bridge with illuminated towers is visible against a dark sky. The entire image has a blue color overlay.

**CITY LIVING  
FOR STUDENTS**

Student Accommodation Guide  
2020-2021



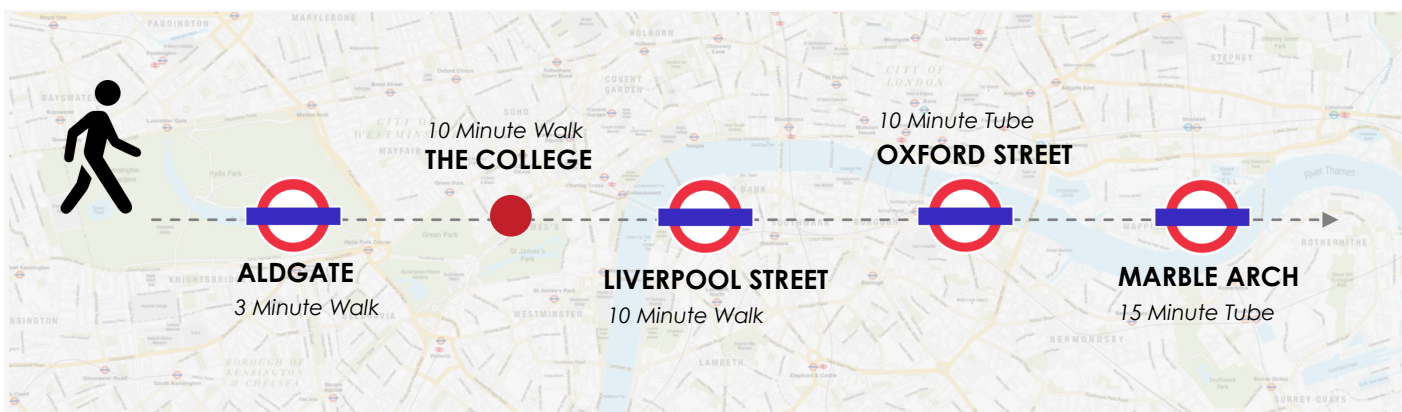


# Liberty

## Self Catering Student Residence

Liberty is located on Leaman Street, in Aldgate, right in the cosmopolitan heart of London's East End. With the famous market of Spitalfields on one side, and the bustle of the City of London on the other, you will never miss out on any of the action of this fantastic location.

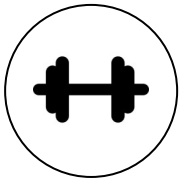
Liberty puts you right next to David Game College within a 10 minute walk. Conveniently positioned near Aldgate, Tower Hill and Liverpool Street stations, you will be able to reach London's major train stations in minutes. Liberty makes you feel right at home, with all bills included, en-suite facilities in each room and access to the on-site gym, so that you can relax and focus on your studies.



## EXPLORE LOCALLY

If Asian cuisine is your thing, then you will be in heaven at Liberty! You are less than a 15 minute walk from the delights of Brick Lane, and you have the choice of so many other Indian restaurants before you even make your way over there, including Halal Restaurant and The Empress. If all that sounds a bit too hot to handle, there are some great places around the area, thanks in part to the fact that the residence is at the hub of commercial activity in London. Finally, if you feel like a short walk, nearby Spitalfields has loads of awesome places to try, including the quirky The Breakfast Club.

## WHAT YOU GET



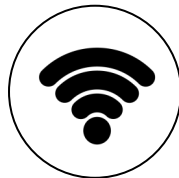
### GYM

Keeping fit is easy with an on-site gym – free to use whenever you like. Feel the burn, without the hole in your wallet!



### BIKE STORAGE

The residence comes with plenty of bike storage so there's no excuse not to bring yours and get some exercise.



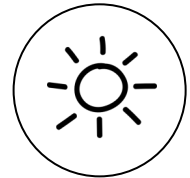
### WIFI

You get high speed broadband and Wi-Fi which you can upgrade to super speed if needed. Connect up to 7 devices!



### EN-SUITE

All rooms have private bathroom facilities. We have en-suite rooms and studios available.



### OUTDOOR SPACE

There's an external courtyard area, so there's plenty of opportunity to get some quiet time or catch a tan... British weather depending, of course.



## KEY FACTS

18+

Available All Year Round

1 Term Minimum Stay

**Room Types:** En-suite rooms, single and twin studios.

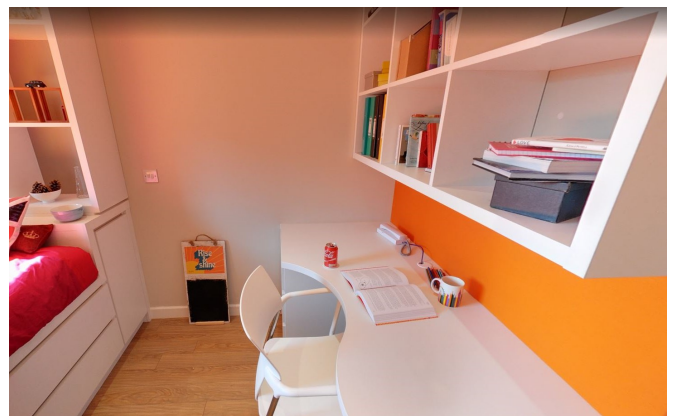
**Check-in/out:** Check in after 3pm and check out before 10am.

**Cancellation policy:** Four weeks prior to arrival.

**Guest policy:** Students are not allowed to have guests to stay without making a booking for them in advance.

**Security:** Reception hours are 9am to 6pm. Security is available after office hours. A 24 hour emergency number is provided in case of emergency.

**Notes:** A coin operated launderette is available within the building. Students are responsible for the cleaning of their own room. One set of bed linen is provided at check in. We do not provide towels or cleaning products.







## Urbanest Self Catering Student Residence

Urbanest is located in the heart of the thriving City of London, an area rich of history and culture, home to some of the world's most striking modern architecture. At Urbanest, you will be on The College doorstep as well as at walking distance from Tower Bridge and the Tower of London, St Paul's Cathedral, London Wall, St Katharine's Dock, Monument, the Gherkin and the Bank of England. In the area you will find great leisure facilities and famous shopping centres, as well as popular tourist attractions and beautiful green areas.

You will also benefit from great transport links.



### EXPLORE LOCALLY

If you step out from your accommodation you will find an abundance of museums galleries flooded across the Thames and Southbank. The iconic Tower Bridge, Tower of London are a few minutes walk away with Tower Hill and Aldgate Tube stations giving you easy access to the Circle Line, the District Line and the Metropolitan Line. Head south to Borough Market and the fashionable Bermondsey Street area to discover many fashionable bars and restaurants. Bankside also provides many options for a day out with the Globe Theatre and Tate Modern within walking distance.



## WHAT YOU GET



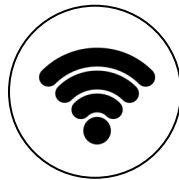
### CINEMA

A modern cinema room open to all residents; here you can relax in the morning with a coffee and watch TV or enjoy a film.



### BIKE STORAGE

The residence comes with plenty of bike storage and free to use bicycles!



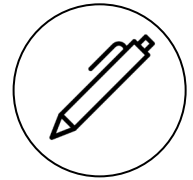
### WIFI

You get high speed Wi-Fi. Included in all rooms, study and social areas to keep you connected!



### EN-SUITE

All rooms have private bathroom facilities. We have en-suite rooms and studios available.



### STUDY ROOMS

Group and private study areas are available to use for all students. Of course we want you to keep up with your studies in style.



## KEY FACTS

18+

Available All Year Round

1 Term Minimum Stay

**Room Types:** En-suite in 6 or 2 bed flat & studios.

**Check-in/out:** Check in after 3pm and check out before 10am.

**Cancellation policy:** Four weeks prior to arrival.

**Guest policy:** Students are not allowed to have guests to stay without making a booking for them in advance.

**Security:** A friendly on site team is on hand 24 hours a day, 7 days a week. A 24 hour emergency number is provided in case of emergency.

**Notes:** A launderette is available within the building managed with a secure QR code system. Students are responsible for the cleaning of their own room. One set of bed linen is provided at check in. We do not provide towels or cleaning products.



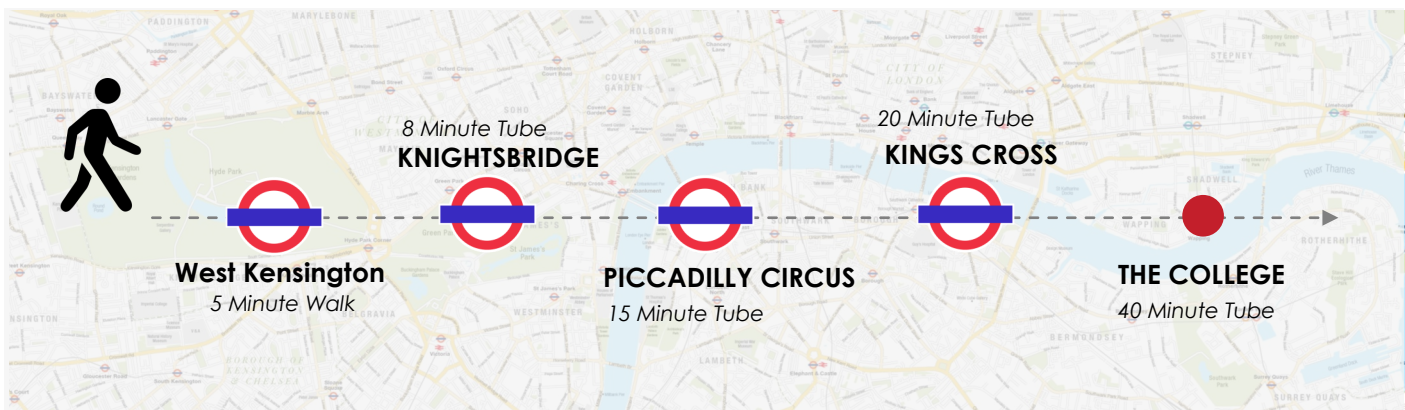


## Fairholme House

### Self Catering DG Residence

You will find yourself in the fantastic borough of Kensington and Chelsea at Fairholme House. This residence is a 3 storey Victorian Building with a basement, on the corner of Fairholme Road and Gledstones Road. It provides accommodation for up to 15 students at a time. With direct routes to the college, we've got your morning commute covered. This residence is conveniently located on the Piccadilly and District lines. There are 3 studios and 13 single rooms, 4 of which are en-suite.

Kensington & Chelsea is an ideal location with easy access to Heathrow Airport terminals and many of London's famous parks such as Holland Park, Hyde Park and Kensington Gardens. Perfect for the summer!



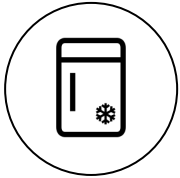
### EXPLORE LOCALLY

In less than a 15-20 minute walk you can explore the vibrant shopping district of Kensington High Street, where you can find a variety of world cuisine, independent shops and larger high street stores. On a Saturday head towards Notting Hill to check the famous Notting Hill Farmers' Market on Kensington Church Street, with its selection of dairy, fresh produce, drinks and baked goods.

The Piccadilly line offers you a simple access directly into Green Park, Piccadilly Circus and Leicester Square for a true experience to London's West End.

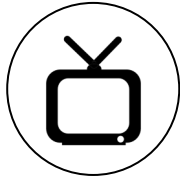


## WHAT YOU GET



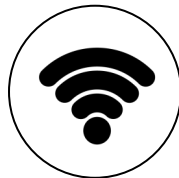
### FRIDGE

Each room has its own fridge for you to keep fully stocked for lengthy study and revision periods!



### TV

Each room comes with a TV and no need to worry here about additional fees, your TV licence is included in your rental price!



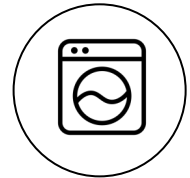
### WIFI

You get high speed Wi-Fi. Included in all rooms, and communal areas. We like to keep you connected!



### CLEANING

We've got you covered. There is a weekly clean of your room and a daily clean of all common areas!



### BED LINEN

We will provide you with a bed linen set. Laundry facilities are available inside the building.



## KEY FACTS

18+

Available All Year Round

1 Week Minimum Stay

**Room Types:** Standard single, single en-suite and studios.

**Check-in/out:** Check-in is between 12-9pm. Check-out before 10am.

**Cancellation policy:** Two weeks prior to arrival.

**Guest policy:** Students are not allowed to have guests to stay without making a booking for them in advance.

**Security:** A 24 hour emergency number is provided in case of emergency. There is also a night warden at the building.

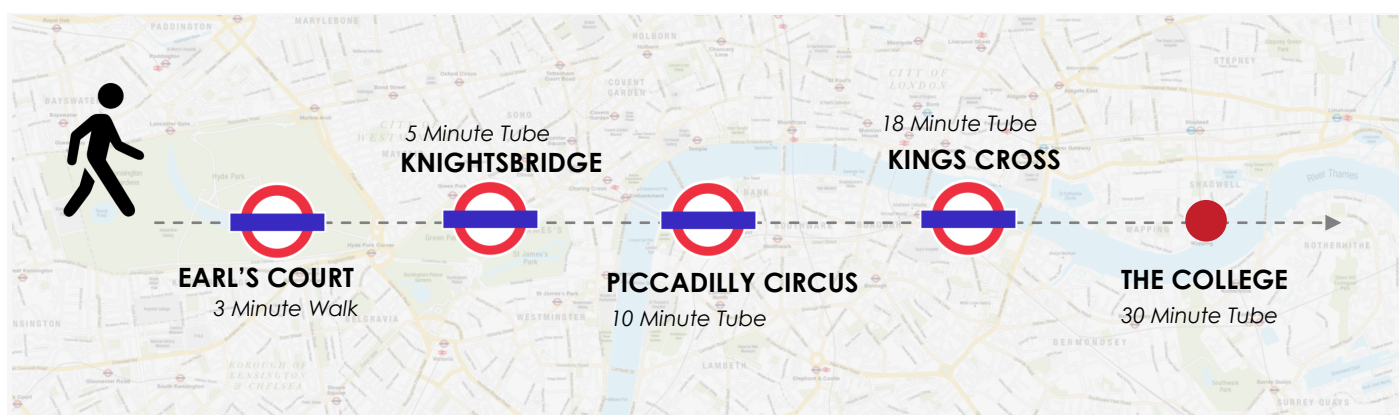




# Penywern House

## Self Catering DG Residence

Penywern House is a 5 storey Victorian building situated in the vibrant neighbourhood of Earls' Court. It provides accommodation for up to 21 students at a time. You will be conveniently located on the Piccadilly and District lines for an easy commute to Piccadilly, China Town and London's famous West End. In this residence you will find basic single rooms, single rooms with private shower and shared rooms. Shared bathrooms and kitchens are available in the building - don't worry! Kensington & Chelsea is an ideal location with easy access to Heathrow Airport terminals and many of London's famous parks such as Holland Park, Hyde Park and Kensington Gardens. A real perk during the summer!



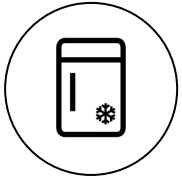
## EXPLORE LOCALLY

Culture lovers are able to catch intimate pop and rock performances at the iconic Troubadour coffee house and contemporary plays and musicals at the Finborough Theatre in Earl's Court. Earl's Court is also home to the famous Earl's Court Exhibition Centre which has various exhibitions throughout the year.

You will enjoy the easy commute on the District and Piccadilly lines to Hammersmith, Covent Garden, Green Park, Victoria, Blackfriars and many other fantastic locations.



## WHAT YOU GET



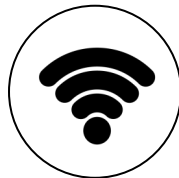
### FRIDGE

Each room has its own fridge for you to keep fully stocked for lengthy study and revision periods!



### TV

Each room comes with a TV and no need to worry here about additional fees, your TV licence is included in your rental price!



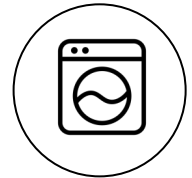
### WIFI

You get high speed Wi-Fi. Included in all rooms, and communal areas. We like to keep you connected!



### CLEANING

We've got you covered. There is a weekly clean of your room and a daily clean of all common areas! There is also coin operated washing machines available.



### BED LINEN

We will provide you with a bed linen set. Laundry facilities are available inside the building.



## KEY FACTS

18+

Available All Year Round

1 Week Minimum Stay

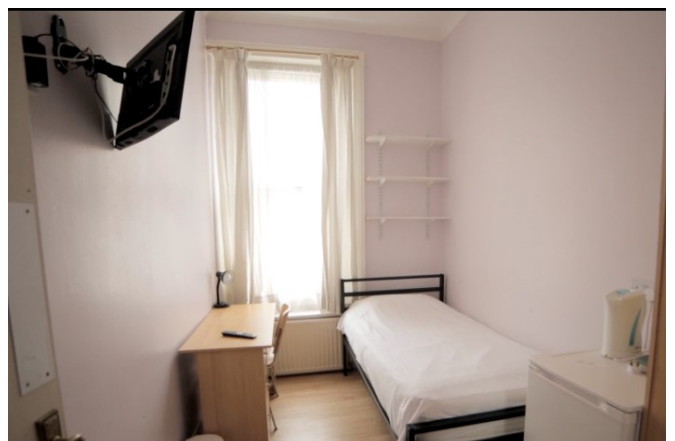
**Room Types:** Standard single, single and twin with private shower.

**Check-in/out:** Check-in is between 12-9pm. Check-out before 10am.

**Cancellation policy:** Two weeks prior to arrival.

**Guest policy:** Students are not allowed to have guests to stay without making a booking for them in advance.

**Security:** A 24 hour emergency number is provided in case of emergency.



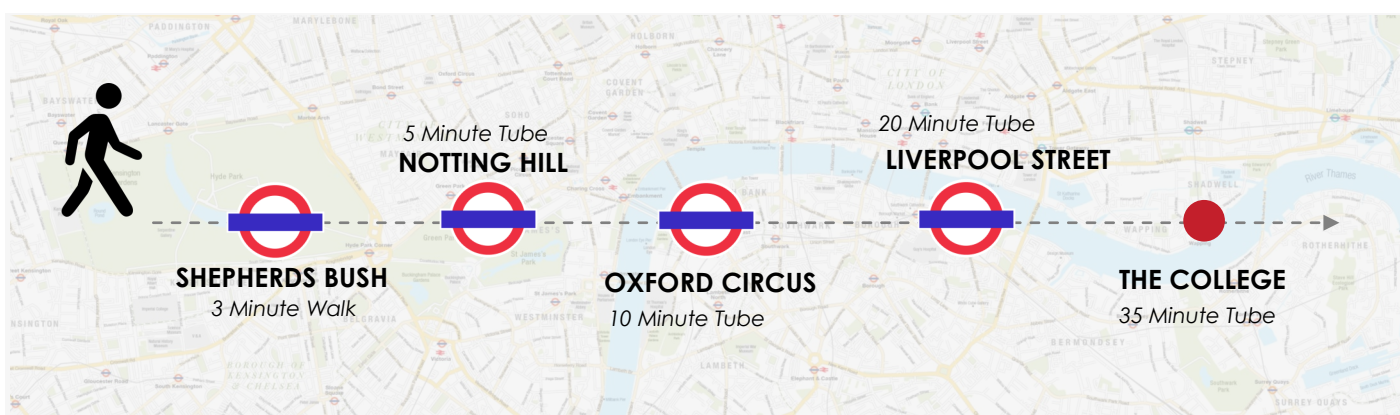


# Shepherd's Bush House

## Self Catering DG Residence

Shepherd's Bush is located in the London Borough of Hammersmith. This is an ideal location for visiting Holland Park and the Notting Hill area with its famous Market - the Portobello Market!

Shepherd's Bush Residence is a 4 storey Edwardian House. It is divided into five 3 bedroom flats and one studio flat, providing accommodation to 25 students at a time. This residence is also conveniently located next to Westfield, one of London's biggest shopping centres - here you can always keep up with the latest trends! Single & twin rooms are available - couples and friends are welcome!

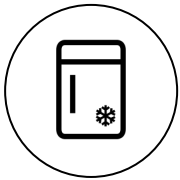


## EXPLORE LOCALLY

Shepherd's Bush is a busy, multicultural neighbourhood with a mix of houses and offices. The area is known for cosy pubs and live music venues like the O2 Shepherd's Bush Empire. The enormous Westfield London mall is home to retail chains, luxury boutiques and global restaurants. Colourful stalls in Shepherd's Bush Market offer fresh produce, prepared food and African fabrics.

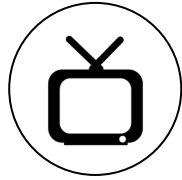


## WHAT YOU GET



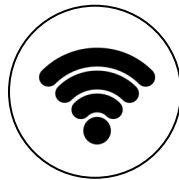
### FRIDGE

Each room has its own fridge for you to keep fully stocked for lengthy study and revision periods!



### TV

Each room comes with a TV and no need to worry here about additional fees, your TV licence is included in your rental price!



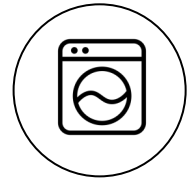
### WIFI

You get high speed Wi-Fi. Included in all rooms, and communal areas. We like to keep you connected!



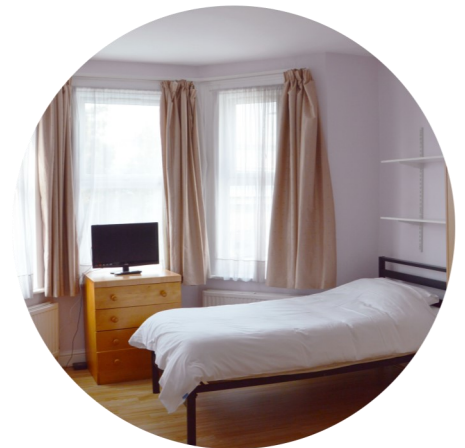
### CLEANING

We've got you covered. There is a weekly clean of your room and a daily clean of all common areas! There is also coin operated washing machines available.



### BED LINEN

We will provide you with a bed linen set. Laundry facilities are available inside the building.



## KEY FACTS

18+

Available All Year Round

1 Week Minimum Stay

**Room Types:** Standard single & twin rooms.

**Check-in/out:** Check-in is between 12-9pm. Check-out before 10am.

**Cancellation policy:** Two weeks prior to arrival.

**Guest policy:** Students are not allowed to have guests to stay without making a booking for them in advance.

**Security:** A 24 hour emergency number is provided in case of emergency. There is also a night warden at the building.

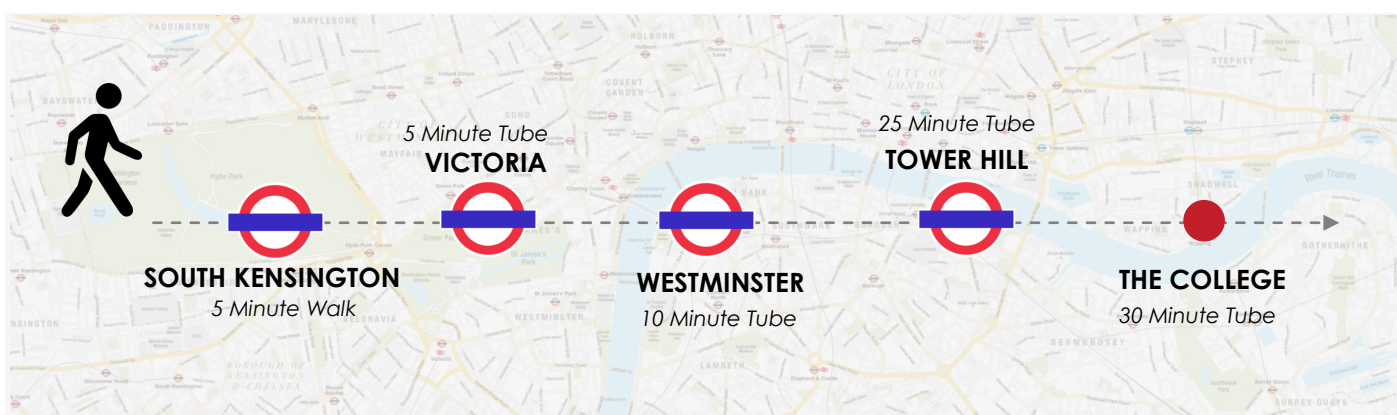




## Fulham Flats

### Self Catering DG Residence

South Kensington is an affluent district of West London in the Royal Borough of Kensington and Chelsea. The district is known as a popular tourist destination due to its density of museums and cultural landmarks - you will always have something to do here! There are six individual one bedroom apartments in a 3 storey building in Fulham Flats. The area offers some of the most famous museums & art galleries in London such as the Natural History Museum, the V&A and the Science Museum. And you have nothing to worry about your stay: each private apartment has a fully equipped kitchen, with a washing machine, fridge, cooker, kettle, microwave, plates and cutlery. The living area consists of a double sofa bed, 4-seat dining table, coffee table and TV - we've got you covered!



### EXPLORE LOCALLY

South Kensington boasts an unbeatable range of free museums and beautiful open spaces. Kensington's famous Royal Albert Hall plays host to The BBC Proms concerts each year. As well as classical concerts, you can also see rock and pop gigs, ballet, opera and even tennis here! There is plenty of green space in Kensington – the area is home to two of London's magnificent Royal Parks: Kensington Gardens and Hyde Park. Kensington Gardens, is also home to Kensington Palace, the current London residence of the Duke and Duchess of Cambridge. This is also where both Queen Victoria and Diana, Princess of Wales, lived.



## WHAT YOU GET



### KITCHEN

Cook as and when you like!  
There is a fully equipped kitchen for residents in your apartment with a dining area for hosting.



### TV

Each apartment comes with a TV and no need to worry here about additional fees, your TV licence is included in your rental price!



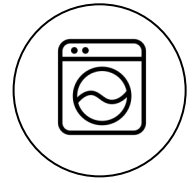
### WIFI

You get high speed Wi-Fi. Included in all rooms, and communal areas. We like to keep you connected!



### CLEANING

We've got you covered. There is a weekly clean of your apartment and a daily clean of all common areas!



### BED LINEN

We will provide you with a bed linen set. Laundry facilities are available inside the building.



## KEY FACTS

18+

Available All Year Round

1 Week Minimum Stay

**Room Types:** One bedroom flats.

**Check-in/out:** Check-in is between 12-9pm. Check-out before 10am.

**Cancellation policy:** Two weeks prior to arrival.

**Guest policy:** Students are not allowed to have guests to stay without making a booking for them in advance.

**Security:** A 24 hour emergency number is provided in case of emergency.

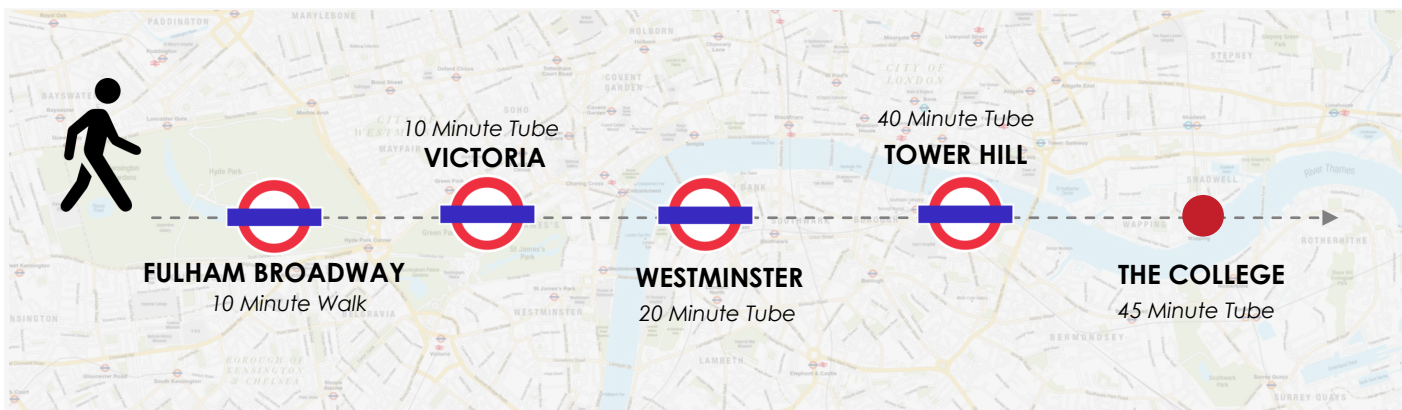




# Dawes House

## Self Catering DG Residence

Take advantage of your stay at Dawes House and explore one of the most engaging area of London. Nestled in a bend of the River Thames, Fulham Broadway area offers its own shopping centre and cinema, and endless possibilities for walks along the river. It is also only a short trip away from famous sites such as Wimbledon, Chelsea and Hammersmith. Dawes House is a 3 storey Victorian House, providing accommodation for up to 12 students at a time. The station is only 10 minutes' walk away and the District line provides direct routes to the College and London's East and West End. Single & twin rooms are available. There is also a self-contained studio flat within the building.



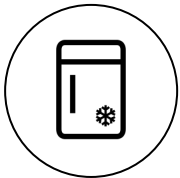
## EXPLORE LOCALLY

The district line stretches across London to bring you direct access to the College through Victoria and Westminster where the iconic London Eye and Houses of Parliament are located. A little closer to home, Fulham Broadway offers many modern bars and restaurants serving up cuisines from all over the world, as well as a large shopping and cinema complex housed above the London Underground Station.

London Film Academy is also in this area, where students can gain film making diplomas and certificates.

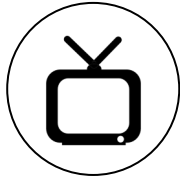


## WHAT YOU GET



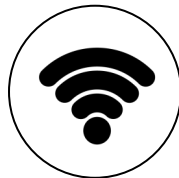
### FRIDGE

Each room has its own fridge for you to keep fully stocked for lengthy study and revision periods!



### TV

Each room comes with a TV and no need to worry here about additional fees, your TV licence is included in your rental price!



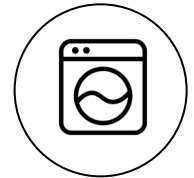
### WIFI

You get high speed Wi-Fi. Included in all rooms, and communal areas. We like to keep you connected!



### CLEANING

We've got you covered. There is a weekly clean of your room and a daily clean of all common areas! There is also coin operated washing machines available.



### BED LINEN

We will provide you with a bed linen set. Laundry facilities are available inside the building.



## KEY FACTS

18+

Available All Year Round

1 Week Minimum Stay

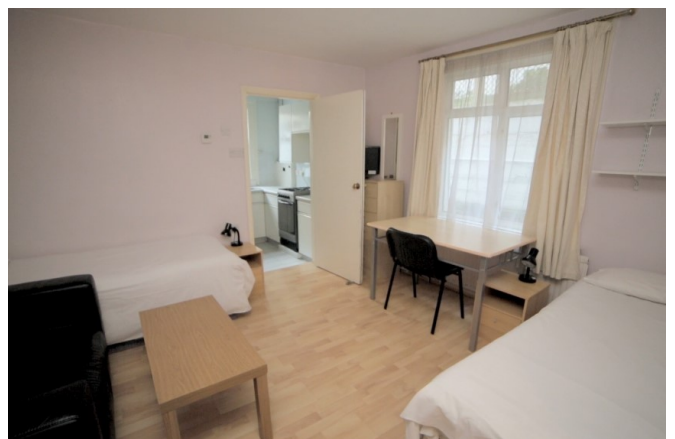
**Room Types:** Standard single & twin, studio.

**Check-in/out:** Check-in is between 12-9pm. Check-out before 10am.

**Cancellation policy:** Two weeks prior to arrival.

**Guest policy:** Students are not allowed to have guests to stay without making a booking for them in advance.

**Security:** A 24 hour emergency number is provided in case of emergency. There is also a night warden at the building.





David Game College  
31 Jewry Street, London  
EC3N 2ET  
United Kingdom

Tel: +44 (0)20 7221 6665 Fax: +44 (0)20 7243 1730  
Email: [accommodation@davidgame-group.com](mailto:accommodation@davidgame-group.com)  
[www.davidgamecollege.com](http://www.davidgamecollege.com)